

Perchlorate Explosive Detection Training

PCO35 Wipes
(ONE-PART POUCH)

PCO35 // OVERVIEW



WHAT CAN PCO35 WIPES DETECT

- perchlorates

WHAT FORMS CAN PCO35 WIPES TEST

- powders, pills, liquids, residues, trace, and bulk

COLOR-CHANGING TECHNOLOGY

- When PCO35 comes in contact with perchlorates, it turns purple



Note: The Trace-Eye-D kit is intended to be used for **presumptive identification purposes only**, and all substances tested should be subjected to more definitive examination by scientists in a properly equipped crime laboratory.

PCO35 // HOW TO USE



Open. Wipe. Look.

Reduce cross-contamination and exposure to PCO35, test surfaces and samples by wearing industry-standard personal protective equipment (PPE) such as nitrile gloves, eye protection, and N95 mask equivalent.

- 1** **OPEN** the pouch and remove the wipe. Do not unfold towelette before or after use. Doing so will result in difficulty observing the results.
- 2** **WIPE** it across the surface to be tested. For best results, sample very small amounts of the substance on the margin of the wipe.
- 3** **LOOK** to see if the formula on the wipe changes color. Allow up to 30 seconds to allow a color reaction to develop
 - negative result // no color change
 - positive result // test turns purple

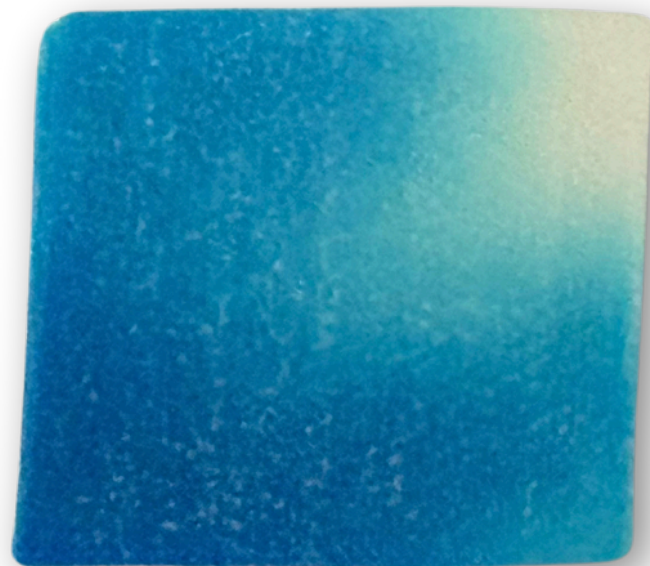
**If testing a suspected substance that is suspended in an oily base (e.g. RDX in petroleum jelly), a delay in the results may be experienced. The medium in which the explosive/oxidizer is suspended will delay results.*

PCO35 // RESULTS

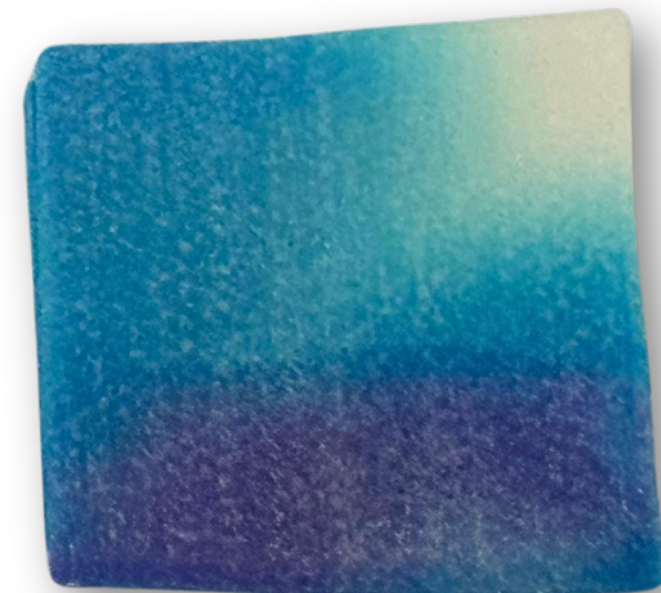


Open. Wipe. Look.

NEGATIVE Result
no color change



POSITIVE Result
test turns purple



PCO35 // POST TEST



Open. Wipe. Look.

All TRACE EYE-D products are safe for disposal in the common waste stream without neutralization or other special treatment, provided the wipe is not contaminated with explosive residue

- 1** **PHOTOGRAPH + STORE** the wipe with a date/time stamp, if required for evidence retention, as the color of the wipe may change over time.
- 2** **DISPOSE** of wipe in accordance with federal state and local environmental laws. No neutralization is required. Can be disposed of in the common waste stream.
- 3** **WASH HANDS + CHANGE** your gloves before conducting additional tests after a positive result is found.

Interested in additional training for your team?



BOOK A LIVE TRAINING SESSION NOW